

MLANA Antibody
Rabbit mAb
Catalog # AP90607**Specification**

MLANA Antibody - Product Information

Application	WB, IHC, FC, ICC
Primary Accession	Q16655
Clonality	Monoclonal
Other Names	
Antigen LB39-AA; Antigen SK29-AA; MAR1; MART-1; MART1; melan-A; Melanoma antigen recognized by T-cells 1; MLANA; Protein Melan-A;	
Isotype	Rabbit IgG
Host	Rabbit
Calculated MW	13157 Da

MLANA Antibody - Additional Information

Dilution	WB~~1:1000 IHC~~1:100~500 FC~~1:10~50 ICC~~N/A
Purification	Affinity-chromatography
Immunogen	A synthesized peptide derived from human MLANA
Description	Involved in melanosome biogenesis by ensuring the stability of GPR143. Plays a vital role in the expression, stability, trafficking, and processing of melanocyte protein PMEL, which is critical to the formation of stage II melanosomes.
Storage Condition and Buffer	Rabbit IgG in phosphate buffered saline , pH 7.4, 150mM NaCl, 0.02% sodium azide and 50% glycerol. Store at +4°C short term. Store at -20°C long term. Avoid freeze / thaw cycle.

MLANA Antibody - Protein Information**Name** MLANA**Synonyms** MART1**Function**

Involved in melanosome biogenesis by ensuring the stability of GPR143. Plays a vital role in the expression, stability, trafficking, and processing of melanocyte protein PMEL, which is critical to the formation of stage II melanosomes.

Cellular Location

Endoplasmic reticulum membrane; Single-pass type III membrane protein. Golgi apparatus. Golgi apparatus, trans-Golgi network membrane. Melanosome. Note=Also found in small vesicles and tubules dispersed over the entire cytoplasm. A small fraction of the protein is inserted into the membrane in an inverted orientation Inversion of membrane topology results in the relocalization of the protein from a predominant Golgi/post-Golgi area to the endoplasmic reticulum. Melanoma cells expressing the protein with an inverted membrane topology are more effectively recognized by specific cytolytic T-lymphocytes than those expressing the protein in its native membrane orientation

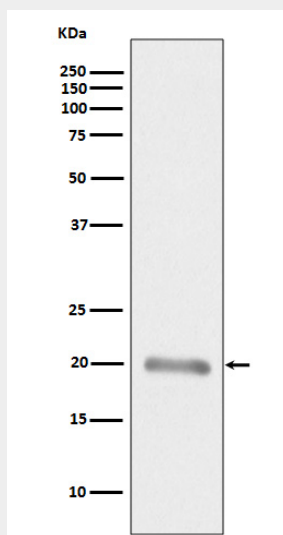
Tissue Location

Expression is restricted to melanoma and melanocyte cell lines and retina

MLANA Antibody - Protocols

Provided below are standard protocols that you may find useful for product applications.

- [Western Blot](#)
- [Blocking Peptides](#)
- [Dot Blot](#)
- [Immunohistochemistry](#)
- [Immunofluorescence](#)
- [Immunoprecipitation](#)
- [Flow Cytometry](#)
- [Cell Culture](#)

MLANA Antibody - Images

Western blot analysis of MLANA expression in Human melanoma tissue lysate.